

Installing your Bluetooth Mouse

(Windows XP)



This helpsheet will explain how to make your Bluetooth mouse work again, or how to install it for the first time.

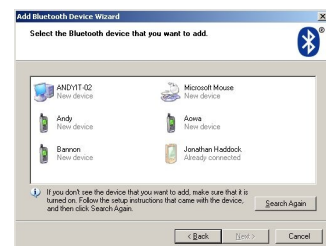
- Firstly, make sure that your Bluetooth Dongle is plugged in. If you have bluetooth embedded in your computer, ensure it is switched on. If you have a Microsoft mouse, the dongle may look like the one pictured above right. Also, check that your mouse has batteries (there may also be a red light on the bottom to show it is on).

- Open the *control panel* from the *Start Menu* and double click *Bluetooth Devices*.



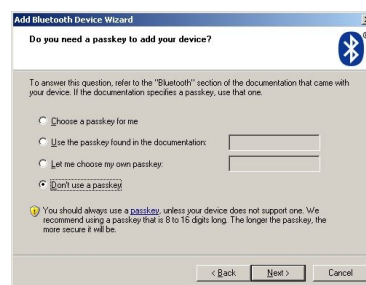
A list of installed Bluetooth devices

- The next screen you will see shows any Bluetooth devices (pictured left) that your computer already knows about, if your mouse is in there already select it and click *remove*.
- Click *Add*, a window appears explaining what you are about to do.
- On the base of the mouse press the small button, possibly marked *connect* (or similar)



A list of devices found when search for Bluetooth devices

- Tick the box next to *My device is setup and ready to be found* and click *Next* >
- You will see a torch moving back and forth on the screen, once devices are found you'll be shown a list (pictured right)
- Select your mouse (in this example *Microsoft Mouse*) and click *Next* >
- The next screen talks about passkeys (see below), as mice cannot use passkeys select *Don't use a passkey* and click *Next* >



Mice generally don't support passkeys, choose "Don't use a passkey" here

- A screen will come up advising the Bluetooth device is being installed. Once this is finished you'll be given the option to click *Finish* – do so.
- Your mouse will now work again